

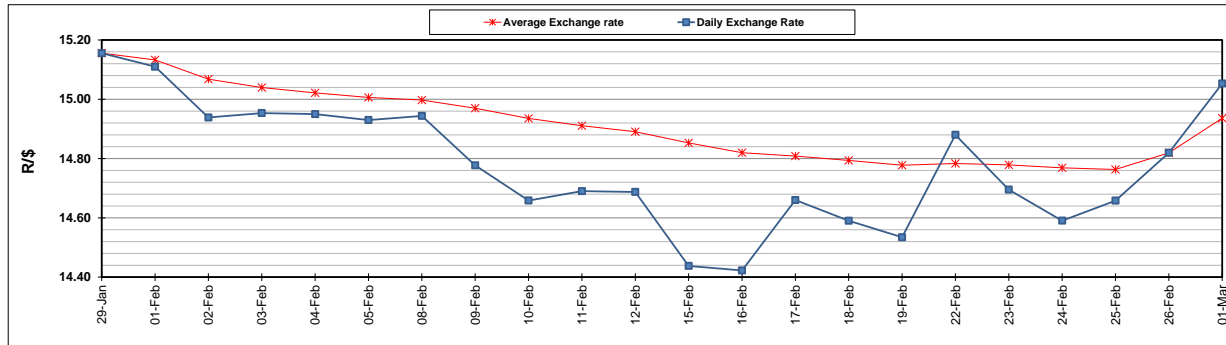
	PETROL 95 ULP	PETROL 93 ULP & LRP	DIESEL 0.05%	DIESEL 0.005%	ILL. PAR.
GAUTENG PUMP PRICE (SA c/l) AS FROM 03/03/2021	1,632.000	1,615.000	-	-	-
WHOLESALE PRICE (SA c/l) AS FROM 03/03/2021	-	-	1,412.420	1,416.820	845.688
SINGLE NATIONAL MAXIMUM RETAIL PRICE	-	-	-	-	1,071.000
BASIC FUEL PRICE - 01/03/2021 (SA c/l)	721.047	712.065	694.760	698.476	672.931
PRESS RELEASE CONTRIBUTION TO BFP 26/02/2021 - 01/03/2021 (SA c/l)	600.170	593.170	599.630	602.030	586.128
UNIT OVER/(UNDER) RECOVERY - 01/03/2021 (SA c/l)	(120.877)	(118.895)	(95.130)	(96.446)	(86.803)
AVERAGE BASIC FUEL PRICE 26/02/2021 - 01/03/2021	715.642	705.788	690.062	693.428	667.774
AVERAGE UNIT OVER/(UNDER) RECOVERY 26/02/2021 - 01/03/2021	(115.472)	(112.618)	(90.432)	(91.398)	(81.646)

ANALYSIS MOVEMENT OF AVERAGE OVER/(UNDER) RECOVERY

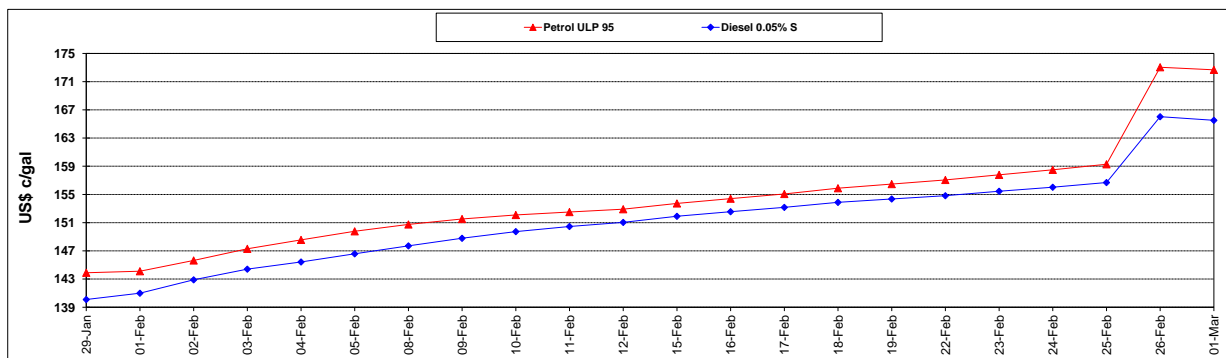
	PETROL 95	PETROL 93	DIESEL 0.05%	DIESEL 0.005%	ILL. PAR.
- MOVEMENT IN INTERNATIONAL PRODUCT PRICES	(107.178)	(104.438)	(82.435)	(83.362)	(73.907)
- MOVEMENT IN EXCHANGE RATE	(8.294)	(8.180)	(7.997)	(8.036)	(7.739)
AVERAGE UNIT OVER/(UNDER) RECOVERY 26/02/2021 - 01/03/2021	(115.472)	(112.618)	(90.432)	(91.398)	(81.646)

R/\$ EXCHANGE RATE - (R/\$15.0528 - 01/03/2021)

EXCHANGE RATE USED IN BASIC FUEL PRICE



INTERNATIONAL PRODUCT PRICES OF BASKET USED IN BASIC FUEL PRICE



BASIC FUEL PRICE IN SA CENTS PER LITRE

